

USW-G17/G20

OPERATOR MANUAL



B&T AG
3608 Thun • Switzerland
Tel +41 33 334 67 00
info@bt-ag.ch
www.bt-ag.ch

Table of content

1. General rules	3
1.1 General Firearm safety rules	3
1.2 USW Chassis Safety rules.....	3
2. Nomenclature.....	5
2.1 Technical data	5
3. Installation procedures	6
3.1 Required tools	6
3.2 Installation.....	6
3.3 Mounting NAR-Rail for sight	10
4. Warranty statement	11
4.1 MANUFACTURERS DISCLAIMER.....	11

Legal Advice!



The assembly of a weapon may not be legal in your country or state. Always check the laws to ensure you are legally able to own and/or assemble in your location. In the United States all NFA rules apply.

Compatibility Advice!



The USW G17 chassis is designed for Glock pistols with a 25.5mm wide slide.
The USW G20 chassis is designed for Glock pistols with a 28.5mm wide slide.
Check that your pistol meets these specifications before installation.

Advice!



The weapon, the chassis and the accessories shown here may not be identical with your weapon, chassis or accessories. However, the installation is analogous.

EYE PROTECTION MUST BE WORN!



SAFETY GOGGLES MUST BE WORN WHEN DISASSEMBLING AND REASSEMBLING THE GUN. PARTS CAN GET INTO THE EYES IF HANDLED INCORRECTLY.

EAR PROTECTION MUST BE WORN!



SUITABLE HEARING PROTECTION MUST ALWAYS BE WORN WHEN SHOOTING WITH A FIREARM.

1. General rules

READ MANUAL BEFORE USE.

1.1 General Firearm safety rules

1. Consider every weapon loaded until checked personally by the individual operator.
2. Always keep fingers off the trigger and outside the trigger guard until the sights are on target.
3. Always point the weapon in a safe direction.
4. Verify your target and the backstop.
5. Before firing always verify the serviceability and condition of both the weapon and ammunition.
6. Hearing and eye protection are mandatory.
7. Be sure to use NATO, SAAMI or CIP certified cartridges of correct caliber only.
8. If a cartridge fails to ignite, keep the muzzle pointed in a safe direction and open the chamber only after a minimum of 30 seconds.
9. Live fire training should be carried out in open or well-ventilated areas to prevent excessive exposure to toxic gases.
10. Operate your weapon consciously and do not use excessive force.

1.2 USW Chassis Safety rules

1. User installation or removal of the chassis must be carried out in accordance with the instructions contained in this manual.
2. Serious injury to the user may result from an improperly installed chassis.
3. Do not try to remove the cross bolt of the lock screw (see picture). Removal can cause serious injury. Reassembly is not possible without specialized tools.



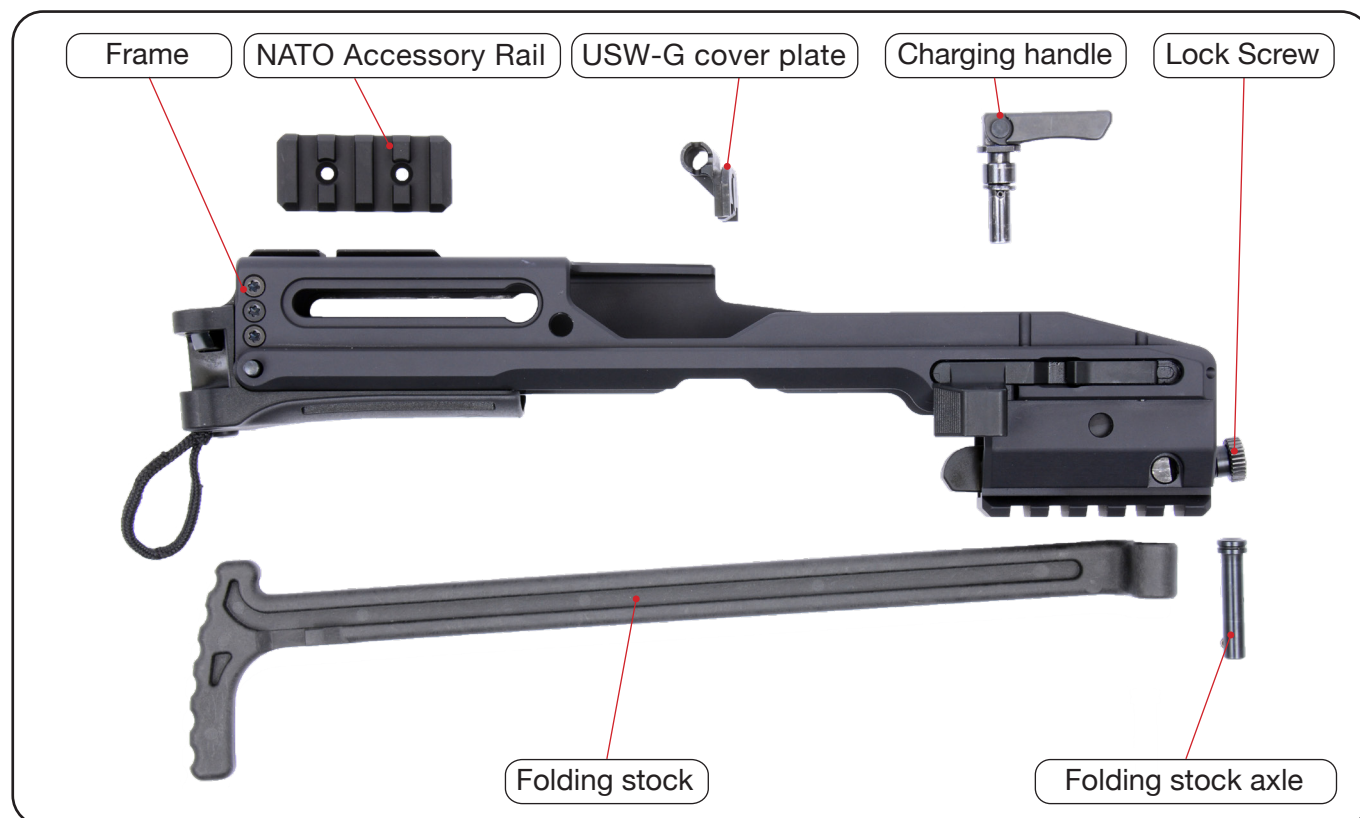
SAFETY ADVICE!



Keep the support hand always around the shooting hand to avoid danger of reaching in front of the muzzle.



2. Nomenclature



2.1 Technical data

Designation	B&T USW-G17 / B&T USW-G20
Manufacturer	B&T AG - Switzerland
Product ID	BT-430200 / BT-430220
Width	61 mm
Height	115 mm (without Pistol)
Length min/max - G17	278 mm / 523 mm
Weight - G17	ca. 430 g
Length min/max - G20	285 mm / 530 mm
Weight - G20	ca. 410 g
Interfaces	Aimpoint ® ACRO / NATO Accessory Rail
Material	Aluminum / Polymer
Treatment	Hartcoat anodized
Color	Black
Scope of delivery	Chassis complete, NATO Accessory Rail for sight

All product specifications are subject to change without prior notice. Published data are mean values and therefore not suitable acceptance criteria.

3. Installation procedures

3.1 Required tools

The following tools are required to install and/or maintain this B&T product:

- » Glock operating manual
- » 2 mm (.08") punch or similar
- » Trox key T10 (for installation of Accessory rail)

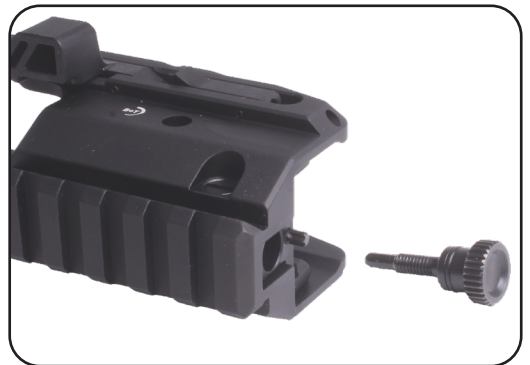


3.2 Installation

- a. Remove the slide from the frame as described in the Glock manual.



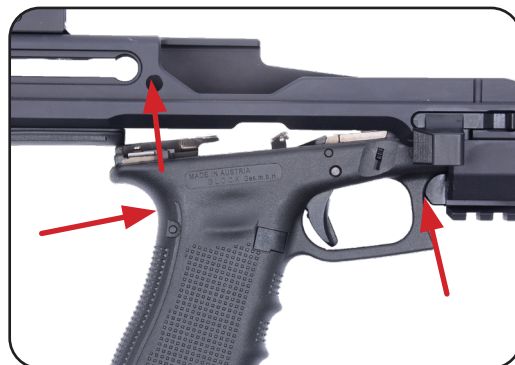
- b. Unscrew the lock screw and remove it.



- c. Insert the frame as shown in a very flat angle.



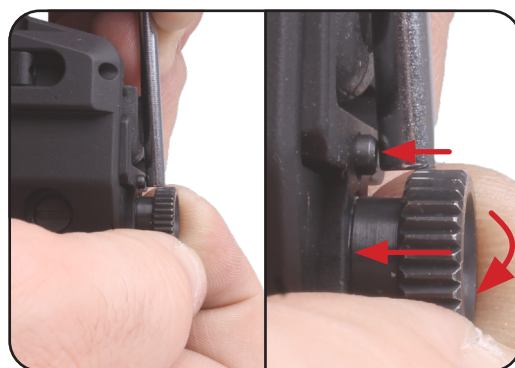
- d. When the trigger guard contacts the chassis, press further forward against spring pressure until you can move the rear of the frame upwards as far as possible into the chassis.




- e. Insure that the frame is inserted correctly in the chassis.
f. If the frame is inserted to high, push it slightly forwards while pulling it down slightly until aligned as illustrated in the image.

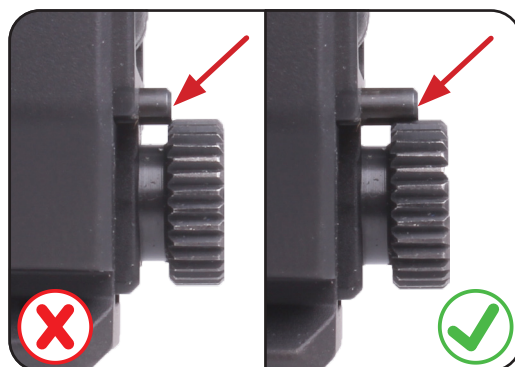


- g. Insert the lock screw and pressing down the locking pin with the 2 mm punch and tighten the locking screw.
h. Remove the 2 mm punch.

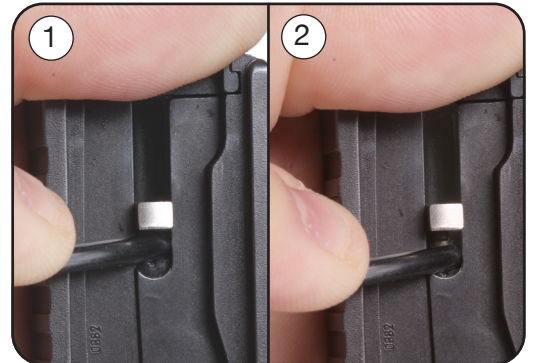


Advice!	
	The locking screw must be tightened by hand, use of tools for tightening can cause damage to the chassis system or the weapon itself.

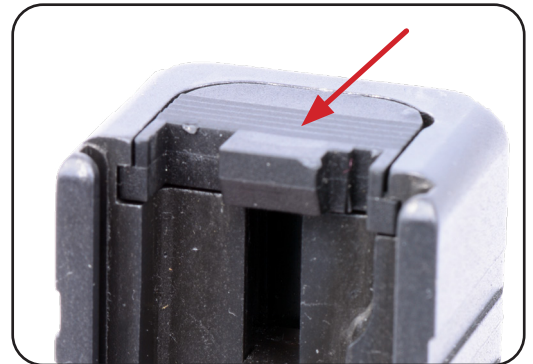
- i. If the locking pin is not snapped in, turn the locking screw until a snapping sound is heard.



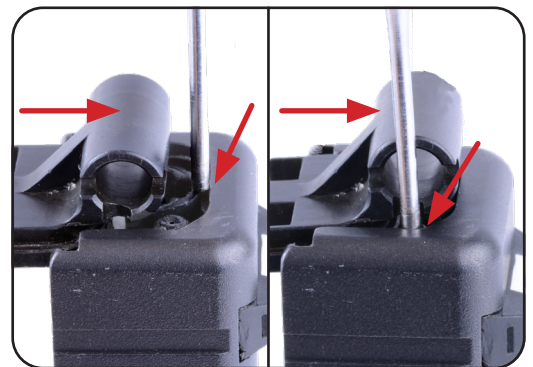
- j. Pressing down the firing pin spacer sleeve with the 2 mm punch tool ...



- k. ... and remove the slide cover plate out of its guide rails.



- l. Insert the USW-G cover plate into the guide rails. Depress the firing pin sleeve spacer with the 2 mm punch and slide the USW-G cover plate further into its guide-rails. Depress the spring-loaded bearing with the punch and slide the USW-G cover plate completely into its guiderails. Clamping the slide into a vice for these steps eases the manipulation.



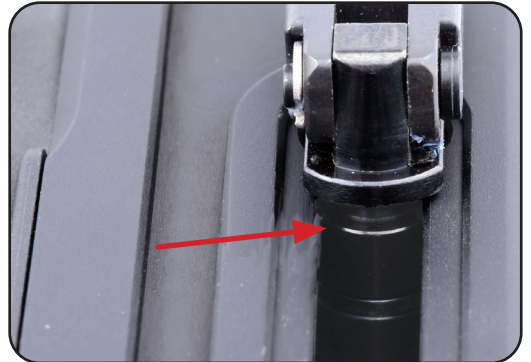
- m. Insert the slide onto the frame and move it backwards until the bushing of the slide cover plate.



- n. Insert the charging handle with the handle facing forward. This can be done from either side.



- o. Make sure the charging handle is inserted completely, before racking the slide.



Advice!




Perform a Function Check as it is described in the Glock operating manual.

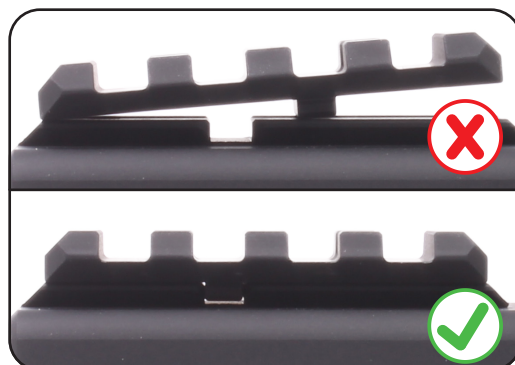
Disassemble in reverse order

3.3 Mounting NAR-Rail for sight

- a. Place rail segment on top of the frame.



Advice!	
	Make sure the rail segment is positioned the correct way.



- b. Apply some medium strength thread locking adhesive (Loctite or similar) on the two mounting screws.
- c. Tighten the screws with 0.5 Nm.



4. Warranty statement

Warranty claims on behalf of the Client are to be explicitly declared as such. During the legal warranty period, B&T provides warranty cover solely for defects that arise as a result of faulty materials, construction errors or poor workmanship. If a warranty claim is justified, B&T will, at its own discretion, either repair or replace the defective product. Costs incurred in transporting the defective good to B&T are borne by the Client. Spare parts fitted and replaced become the property of B&T.

Inasmuch as is legally permitted, any other liability of B&T is excluded, in particular liability for damages arising either directly or indirectly from the delivered good itself, from its use or from its defects

Merchandise is covered by the warranty provisions of the manufacturer. Parts that are naturally subject to wear and tear, damage arising from insufficient maintenance work, noncompliance with operating regulations and cases of force majeure are all excluded from warranty cover. Warranty claims lapse if the Client itself or third parties alter or repair the delivered good without the prior written consent of B&T. All product specifications are subject to change without prior notice. Published data are mean values and therefore not suitable acceptance criteria.

4.1 MANUFACTURERS DISCLAIMER

The manufacturer is not responsible for improper usage of this product. This product is potentially dangerous, and as such it's the user's responsibility to understand and implement its proper use. If you don't understand the instructions in this manual please contact the manufacturer for further clarification.

The manufacturer:

B&T AG - 3608 Thun - Switzerland

Phone +41 33 334 67 00

e-mail: info@bt-ag.com

Notes: